

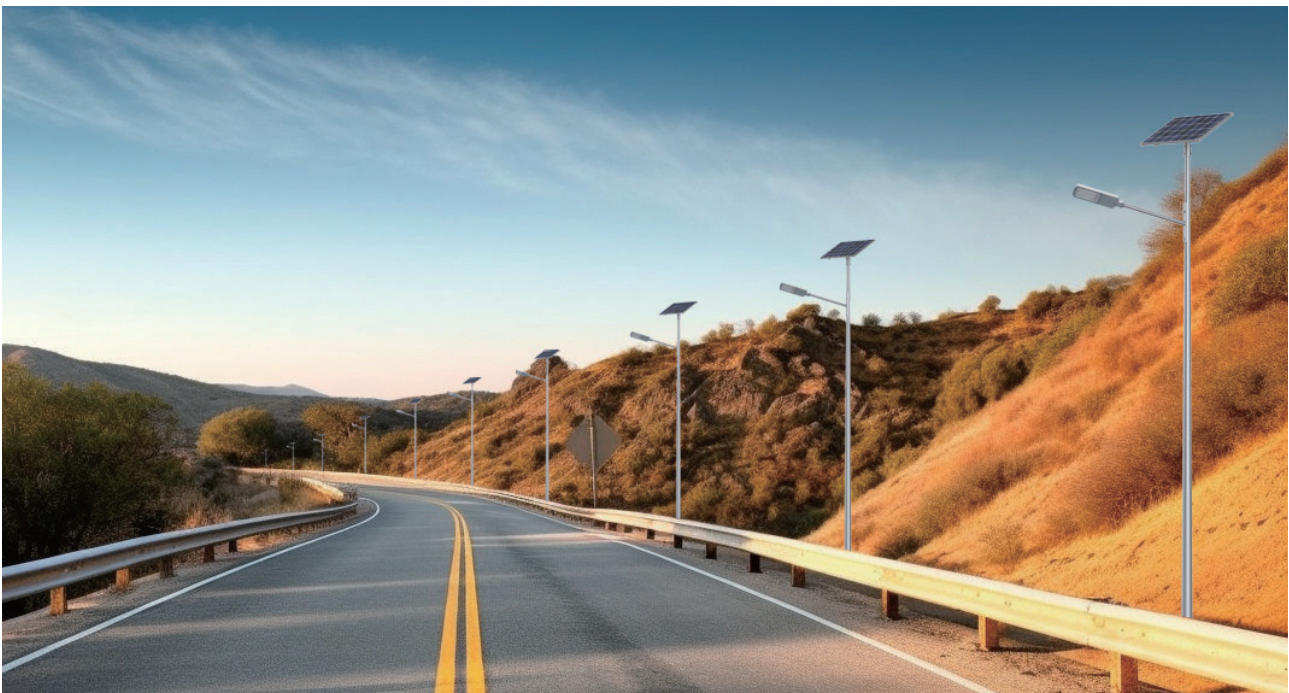
## MT-SET

30W/40W



### SOLO-E-III-ALL IN TWO SOLAR STREET LIGHT

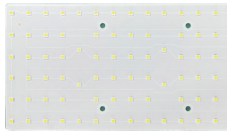
Low voltage design, safe and reliable;  
Multiple wide angles, illumination from different directions, wide lighting range;  
High photoelectric conversion efficiency, can be charged even in rainy days;  
Contains protection circuit and anti-leakage settings, stable voltage;  
Use large lens beads for better brightness.



Model No.	MT-SET-001	MT-SET-002
Rated Power	30W	40W
System Voltage	DC12.8V	DC12.8V
Lithium Battery	24AH	36AH
Light Source	3030	
Light Distribution	Bat-Wing light distribution (150°×75°)	
Light Efficiency	110~160LM/W	
Color Temperature	3000K~6000K	
CRI	≥Ra70	
IP Rating	IP65	
Working Temperature	-10℃~+60℃	
Working humidity	10%~90%RH	
LED Lifespan	50000H~100000H	
Mount Diameter	φ60mm	
Lamp Dimension	590×220×90mm	
Lamp Weight(Net weight)	3.9kg	4.9kg
Package Dimension (Sleeve not included)	620×330×270mm	620×330×270mm
Suggested Mount Height	4m~6m	4m~6m
Warranty	3 Years	

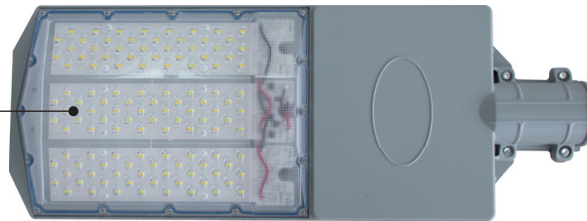


## Product Structure



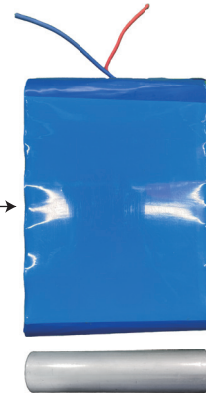
### LED PCB Board

The design of directly mounting LED chips onto aluminum substrates features simplicity in structure, reduced component count, cost-effectiveness, space saving, excellent heat dissipation, good optical performance, and environmental friendliness. Implementing a dual-sided emitting design.



### Smart Controller

With intelligent control of lighting time, overcharge, over discharge, electronic shortcircuit, overload protection, anti-reverseconnection protection and other functions. it can adapt to cold, high temperature, humidity and other environments.



### LiFePo4 Battery

Recycle more than 1500times, reliable and safe, no explosion and fire; High temperature resistance. large capacity, green environmental protection

## Light Source Parameters

### Street Light Intensity Test Report (30W Parameter)

DATA OF LAMP		PHOTOMETRIC DATA		Eff: 131.00 lm/W	
MODEL	MT-SET-001	Imax (cd)	2141	$\eta$ street up (%)	0.4
NOMINAL POWER (W)	30	LOR (%)	100.0	$\eta$ street down (%)	47.0
RATED VOLTAGE (V)	3	TOTAL FLUX (lm)	3930	$\eta$ house up (%)	0.3
NOMINAL FLUX (lm)	1310.02	MAXIMUM $\theta$ (C, $\gamma$ )	0, 39.0	$\eta$ house down (%)	52.4
LAMPS INSIDE	3	$\eta$ up (%)	0.7	76° FLASH AREA (m <sup>2</sup> )	0.00100
TSET VOLTAGE (V)	3.24	$\eta$ down (%)	99.3	SLI	19.246

### Meridian Light Distribution Curve(30W Parameter)

